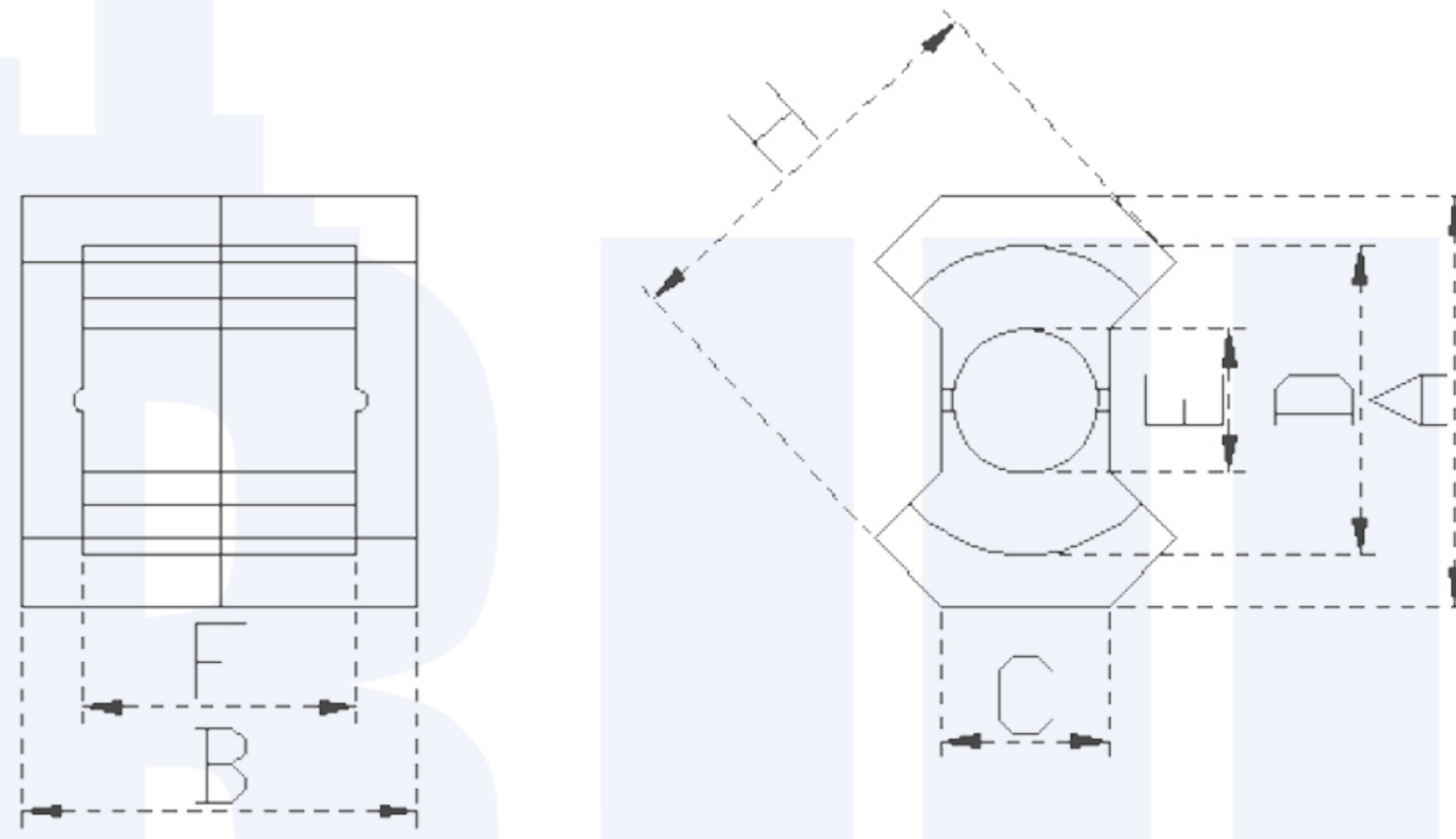


RM series



MATERIALS:SR-10P, SR-7P, SR-5P, SR-P4

TYPE	Dimension:mm							Weight: g
	A	B	C	D	E	F	H	
RM4	10.8±0.2	10.4±0.1	4.45±0.15	8.15±0.2	3.8±0.1	7.2±0.2	9.63±0.2	1.7
RM5	14.35±0.25	10.4±0.2	6.6±0.25	10.4±0.2	4.8±0.1	6.5±0.2	12.05±0.25	3.0
RM6	17.6±0.3	12.4±0.2	8.0±0.2	12.65±0.25	6.3±0.1	8.2±0.2	15.0±0.3	5.5
RM7	19.9±0.4	13.4±0.2	7.1±0.5	15.08±0.33	7.1±0.15	8.65±0.25	16.85±0.35	7.2
RM8	22.75±0.45	16.4±0.2	10.8±0.2	17.3±0.3	8.4±0.15	11.0±0.2	19.7-0.7	13.0
RM10	27.85±0.65	18.6±0.1	13.25±0.25	21.65±0.45	10.7±0.2	12.7±0.3	24.15±0.55	23.0
RM12	36.75±0.65	23.5±0.2	16.0±0.3	25.5±0.5	12.6±.2	17.1±0.3	29.25±0.55	42.0
RM14	41.6±0.6	28.8±.2	18.7±0.3	29.5±0.5	14.75±0.25	21.1±.3	34.2±0.5	70.0

TYPE	Effective parameter				AL (nH/N ²) (AL±25%)			
	C ₁ (mm ⁻¹)	A _e (mm ²)	L _e (mm)	V _e (mm ³)	SR-P4	SR-5P	SR-7P	SR-10P
RM4	1.62	14.0	22.7	318			2450min	
RM5	0.94	23.7	22.4	530			4350min	
RM6	0.78	36.6	28.6	1050			5250min	
RM7	0.69	46.0	31.8	1460	1950min			
RM8	0.59	64.0	38.0	2430			7000min	
RM10	0.45	98.0	44.0	4310	3630min			
RM12	0.40	140	56.9	7960	4150min			
RM14	0.39	178	70.0	12400	4600min			