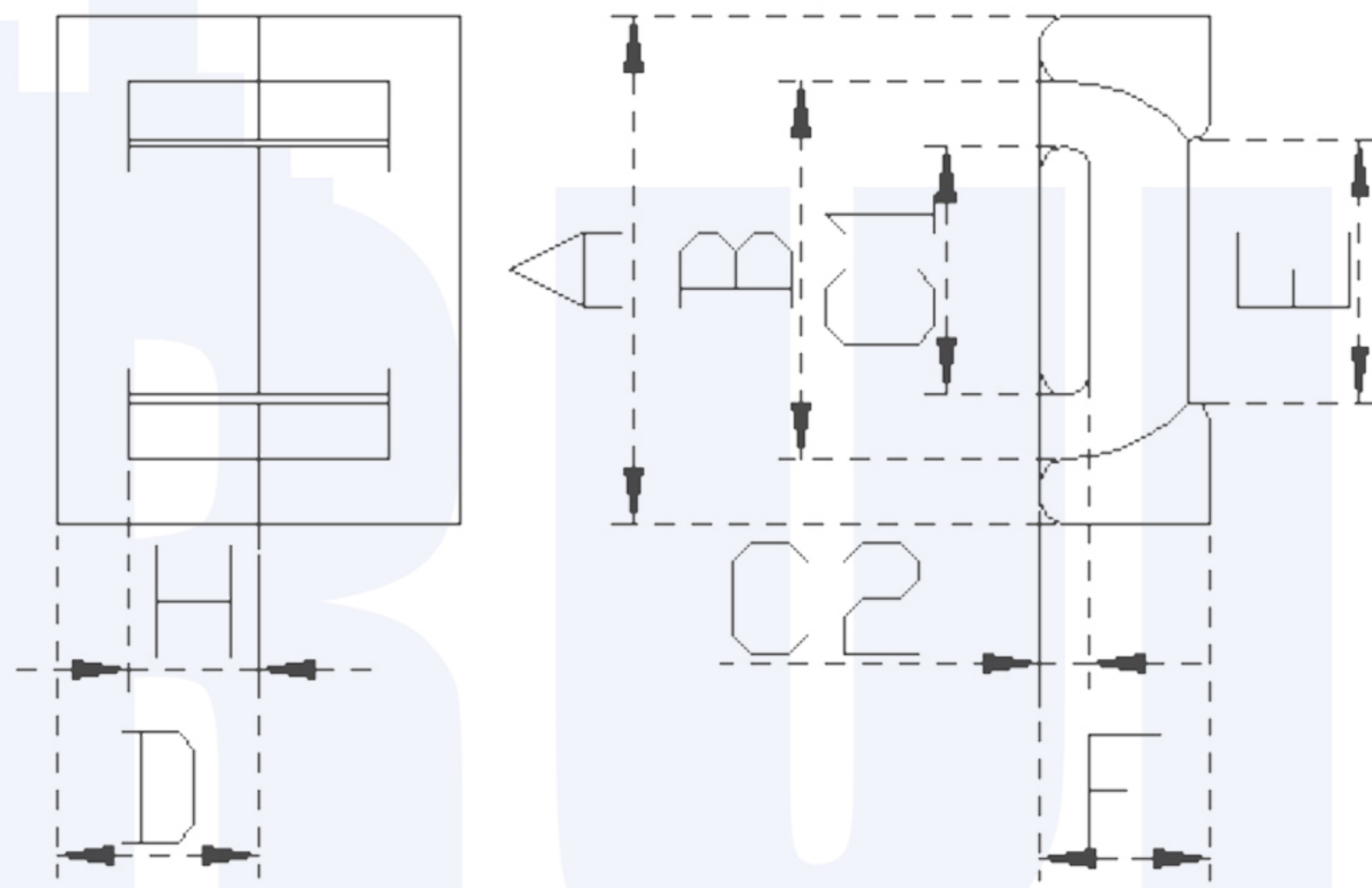


EPC series



MATERIALS:SR-10P, SR-7P, SR-5P, SR-P4

TYPE	Dimension:mm								Weight: g
	A	B mim	C1	C2	D	E min	F	H	
EPC10	10.2±0.2	7.6	5.0±0.1	1.9±0.1	4.05±0.1	5.3	0.9±0.1	2.65±0.1	1.2
EPC13	13.0±0.3	10.50	5.6±0.15	2.05±0.1	6.60±0.2	8.3	4.6±0.15	4.50±0.2	2.1
EPC17	17.6±0.38	14.30	7.7±0.15	2.8±0.1	8.55±0.2	11.5	6.0±0.15	6.05±0.15	4.5
EPC19	19.1±0.48	15.80	8.5±0.15	2.5±0.1	9.75±0.2	13.1	6.0±0.15	7.25±0.2	5.3
EPC25	25.1±0.48	20.65	11.5±0.2	4.0±0.1	12.5±0.2	17.1	8.0±0.2	9.0±0.3	13.0
EPC27	27.1±0.48	21.60	13.0±0.3	4.0±0.1	16.0±0.2	18.5	8.0±0.2	12.3±0.3	18.0
EPC30	30.1±0.48	23.60	15.0±0.3	4.0±0.1	17.5±0.2	20.0	8.0±0.2	13.0±0.3	23.0

TYPE	Effective parameter				AL (nH/N ²) (AL±25%)			
	C ₁ (mm ⁻¹)	A _e (mm ²)	L _e (mm)	V _e (mm ³)	SR-P4	SR-5P	SR-7P	SR-10P
EPC10	1.89	9.39	17.8	167	1000			
EPC13	2.16	12.5	30.6	382	870			
EPC17	1.76	22.8	40.2	917	1150			
EPC19	2.03	22.7	46.1	1047	940			
EPC25	1.28	46.4	59.2	2748	1560			
EPC27	1.34	54.6	73.1	3995	1540			
EPC30	1.32	61.0	81.6	5035	1570			