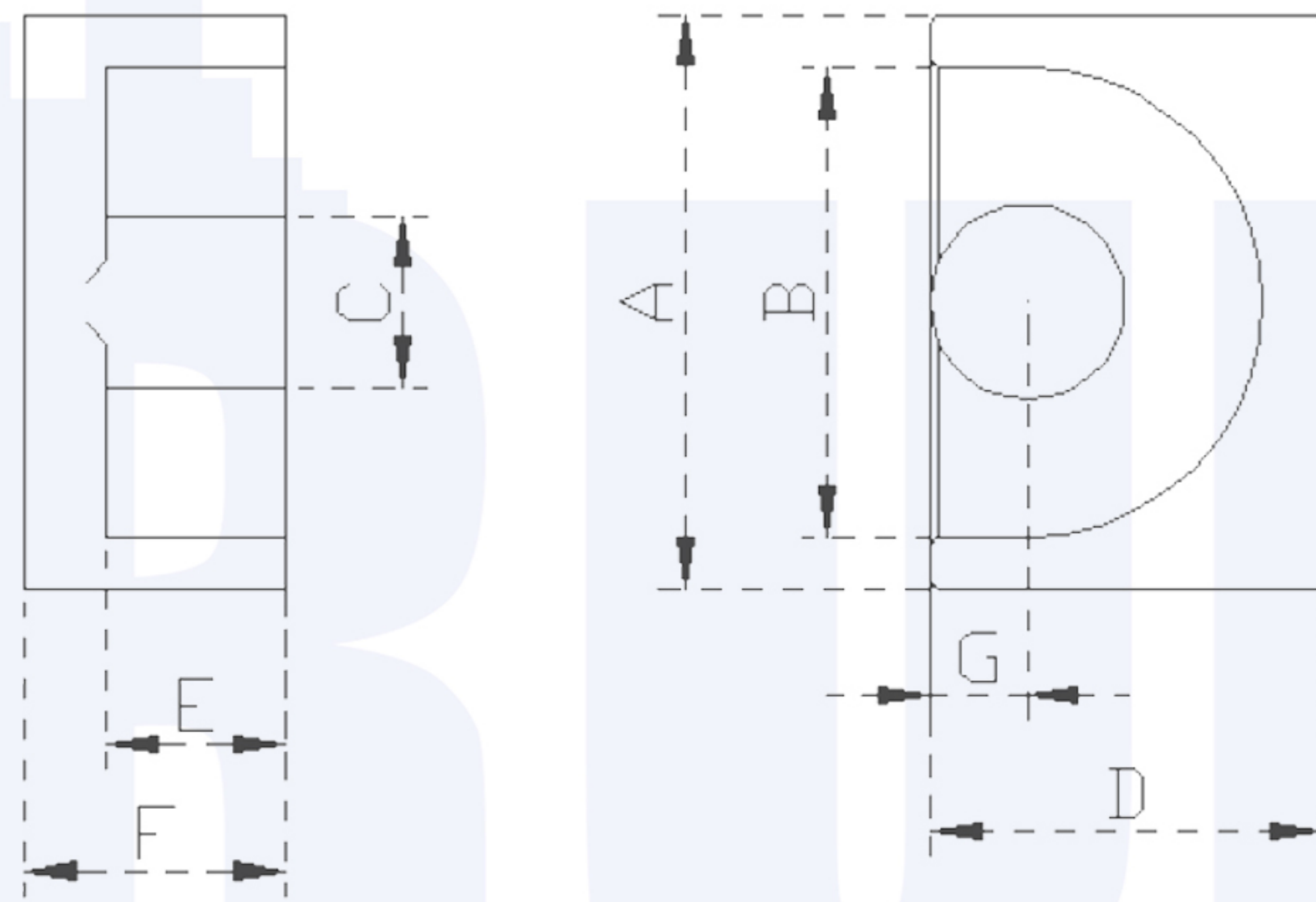


EP series



MATERIALS:SR-10P, SR-7P, SR-5P, SR-P4

TYPE	Dimension:mm							Weight:g
	A	B	C	D	F	G	H	
EP5	6.0±0.15	4.4±0.15	1.80 ⁺⁰ _{-0.15}	3.9 ⁺⁰ _{-0.25}	2.15 ⁺⁰ _{-0.1}	2.8±0.1	0.9±0.1	1.1
EP7	9.2±0.2	7.4±0.2	3.40-0.2	6.5-0.3	2.5+0.3	3.75±0.1	18.-0.2	1.4
EP10	11.5±0.3	9.4±0.2	3.45-0.3	7.85-0.4	3.6+0.2	5.2-0.4	1.95-0.25	2.8
EP13	12.5±0.3	10.0±0.3	4.50-0.3	9.0-0.4	4.5mim	6.5-0.4	2.5-0.2	5.1
EP17	18.0±0.4	12.0±0.4	5.85-0.35	11.25-0.5	5.5+0.3	8.5-0.4	3.25±0.2	13.0
EP20	24.0±0.5	16.5±0.4	9.0-0.5	15.3-0.7	7.0+0.3	10.8-0.4	4.5±0.2	32.0
EP30	30.0±0.5	24.1±0.3	14.55±0.25	23.1±0.5	15.0+0.2	11.8±0.2	7.6±0.25	75.0

TYPE	Effective parameter				AL (nH/N ²) (AL±25%)			
	C ₁ (mm ⁻¹)	A _e (mm ²)	L _e (mm)	V _e (mm ³)	SR-P4	SR-5P	SR-7P	SR-10P
EP5	3.154	3.09	9.73	30	552			
EP7	1.52	10.3	15.7	163				3500
EP10	1.70	11.3	19.3	218				3300
EP13	1.24	19.6	24.3	476				5000
EP17	0.84	33.9	28.5	964				11500
EP20	0.51	78.3	39.8	3110	4000			
EP30	0.35	179.0	39.8	11200	6600			